

1-800-362-2764  
www.oups.org

# SAN-57-2.22

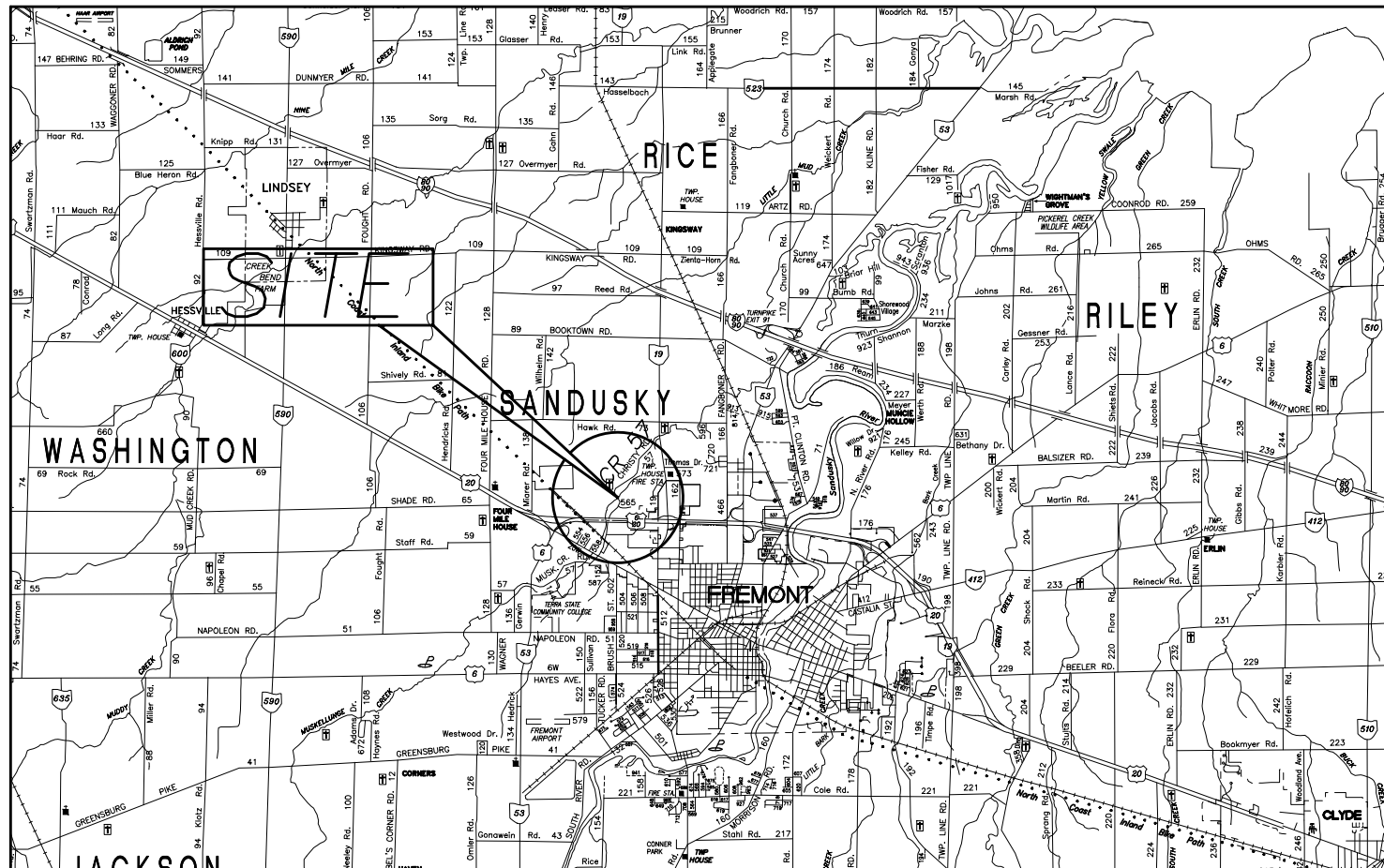
## OVER MUSKELLUNGE CREEK

### SECTION 20, SANDUSKY TOWNSHIP

### SANDUSKY COUNTY, OHIO

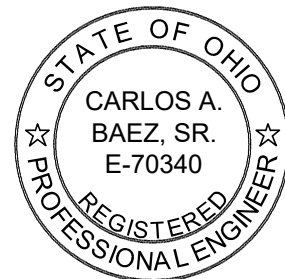
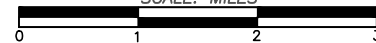
#### PROJECT DESCRIPTION

REPLACEMENT OF EXISTING BOX BEAMS AND FABRICATING,  
DELIVERY & ERECTION OF PRESTRESSED CONCRETE  
NON-COMPOSITE BOX BEAMS ON EXISTING ABUTMENTS



LOCATION MAP

SCALE: MILES



PLANS PREPARED BY:  
SANDUSKY COUNTY ENGINEER  
2500 WEST STATE ST.  
FREMONT, OHIO 43420  
TEL. (419) 334-9731  
FAX. (419) 334-9733

12/13/22  
DATE

*Carlos Baez*  
SANDUSKY COUNTY ENGINEER

#### SITE DATA

Latitude: N41°22'21.6"  
Longitude: W83°08'47.4"

Township: Sandusky, Section 20

Road R/W: 60.0'  
Volume: 1, Page: 89 Rev. Vol:5, Pg.:58  
Current ADT (2010): 388

Muskellunge Creek  
Flow Direction: West to East  
Ditch Maintenance: No

Drainage Area: 26,880 Ac. (42 Sq. Miles)

Drainage (cfs)  
Q25 = 2,500 cfs  
Q100 = 3,130 cfs

Bedrock Impact : No

#### EXISTING STRUCTURE

Type: 61'-10" x 32' wide prestress beams

Span: 60' Clear Span  
Roadway: 32'±  
Skew: None  
Date Built: 1972  
Condition: Poor  
SFN: 7242085

#### PROPOSED STRUCTURE

Type: 61'-10" x 32' wide prestress beams  
On existing abutments

Span: 60'-0" Clear Span  
Dim: (8) B33-48 x 61'-10" Prestressed Box Beams

Roadway: 32'±  
Skew: None  
Design Loading: See General Notes

#### MAINTENANCE OF TRAFFIC

Type: Full Closure  
Closure Between: Commerce Dr & SR 19  
Detour Length: 2.2 Miles

#### PUBLIC NOTIFICATION

Contacts: Sandusky County EMA  
Advanced Closure Notice: One Week

FEDERAL PROJECT No.  
E220477

PID NO.  
117342

CONSTRUCTION PROJECT NO.

SAN-57-2.22 SUPERSTRUCTURE REPLACEMENT

1  
2

**GENERAL NOTES**

1. THIS PROJECT DOES NOT INVOLVE THE ACQUISITION OF TEMPORARY OR PERMANENT RIGHT-OF-WAY
2. NO WORK IS PLANNED IN THE WATERWAY
3. THIS PROJECT DOES NOT INVOLVE ROADWAY REALIGNMENT
4. DESIGN LOADING
  - DECK: HL-93
  - SUBSTRUCTURE: EXISTING ABUTMENTS HS-20-44
  - FOUNDATION: EXISTING FOUNDATION HS-20-44

**UTILITY INVOLVEMENT - Coordination by County**  
 NO UTILITY RELOCATION WILL BE REQUIRED WITH THIS PROJECT.  
 AT&T COORDINATION REQUIRED  
 SPECTRUM COORDINATION REQUIRED

**RAILROAD INVOLVEMENT**  
 NO RAILROADS ARE AFFECTED BY THIS PROJECT

**WORK PERFORMED BY COUNTY FORCES**

1. SITE WORK-INCLUDING ITEM 614 MAINTAINING TRAFFIC
2. GUARDRAIL REMOVAL
3. WEARING SURFACE REMOVAL
4. EXISTING SUPERSTRUCTURE REMOVED \*SEE ITEM 202
5. PATCHING OF CONCRETE SURFACES/BACKWALL REMOVAL
6. BEARING SEAT/BACKWALL PREPARATION
7. CONSTRUCTION LAYOUT
8. DOWLING & GROUTING OF BEAMS
9. WATERPROOFING (TYPE 3)
10. WEARING SURFACE REPLACEMENT (ITEM 441, TYPE 1)
11. INSTALLATION OF BRIDGE TERMINAL ASSEMBLY AND GUARDRAIL BEYOND BRIDGE LIMITS
12. ITEM 832 EROSION CONTROL

**ITEM 202-STRUCTURE REMOVED OVER 20' APP**

IT SHALL BE NOTED THAT NO WHEELED OR TRACKED EQUIPMENT WILL BE PERMITTED INTO THE CREEK. CARE SHALL BE TAKEN TO PREVENT DEBRIS FROM ENTERING THE CREEK. ANY MATERIAL THAT ENTERS THE CREEK SHALL BE IMMEDIATELY REMOVED BY HAND OR MECHANICAL EQUIPMENT LOCATED OUTSIDE THE WATERWAY.

**ITEM 519-PATCHING CONCRETE STRUCTURES**

IT SHALL BE NOTED THAT CARE SHALL BE TAKEN TO ENSURE PATCHING OF CONCRETE SURFACES DOES NOT RESULT IN MATERIAL ENTERING THE WATERWAY.

**ITEM 614-MAINTAINING TRAFFIC**

TRAFFIC CONTROL, CLOSURES AND DETOURS WILL BE PERFORMED BY COUNTY FORCES. INCLUDING THE NOTIFICATION REQUIREMENTS OUTLINED IN THE TRAFFIC ENGINEERING MANUAL SECTIONS 642-8 & 642-58

**WORK PERFORMED BY LPA CONTRACT**

1. FABRICATE, DELIVER & ERECT PRESTRESSED CONCRETE BOX BEAMS \*ITEM 515
2. FABRICATE, DELIVER & PLACE BEARING PADS \* ITEM 516
3. FABRICATE, DELIVER & INSTALL BRIDGE RAILING \*SEE ITEM 517

\*THE REQUIREMENTS OF ITEMS 515, 516, AND 517 OF THE 2019 EDITION OF THE STATE OF OHIO, DEPARTMENT OF TRANSPORTATION, CONSTRUCTION AND MATERIALS SPECIFICATIONS (ODOT C&MS) APPLY, EXCEPT AS MODIFIED BY THESE PLANS.

**ITEM 515-PRESTRESSED CONCRETE NON-COMPOSITE BOX BEAM MEMBERS LEVEL 1, B33-48 (61'-10" O/O)**

PREFORMED EXPANSION JOINT MATERIAL (ODOT CMS 705.03)  
 -2"x2" (OR EQUAL TO BEARING THICKNESS) TO FIT UNDER BEAM ENDS (144 SF)  
 -6"x6" (OR EQUAL TO BEARING PAD THICKNESS) UNDER DOWEL LOCATIONS (16 EACH)

3/4" ANCHOR DOWEL BARS (16 EACH) AND 1" DIAMETER STEEL TIE RODS THREADED AT BOTH ENDS WITH HEX NUTS AND PLATE WASHERS PER ODOT PSBD-2-07

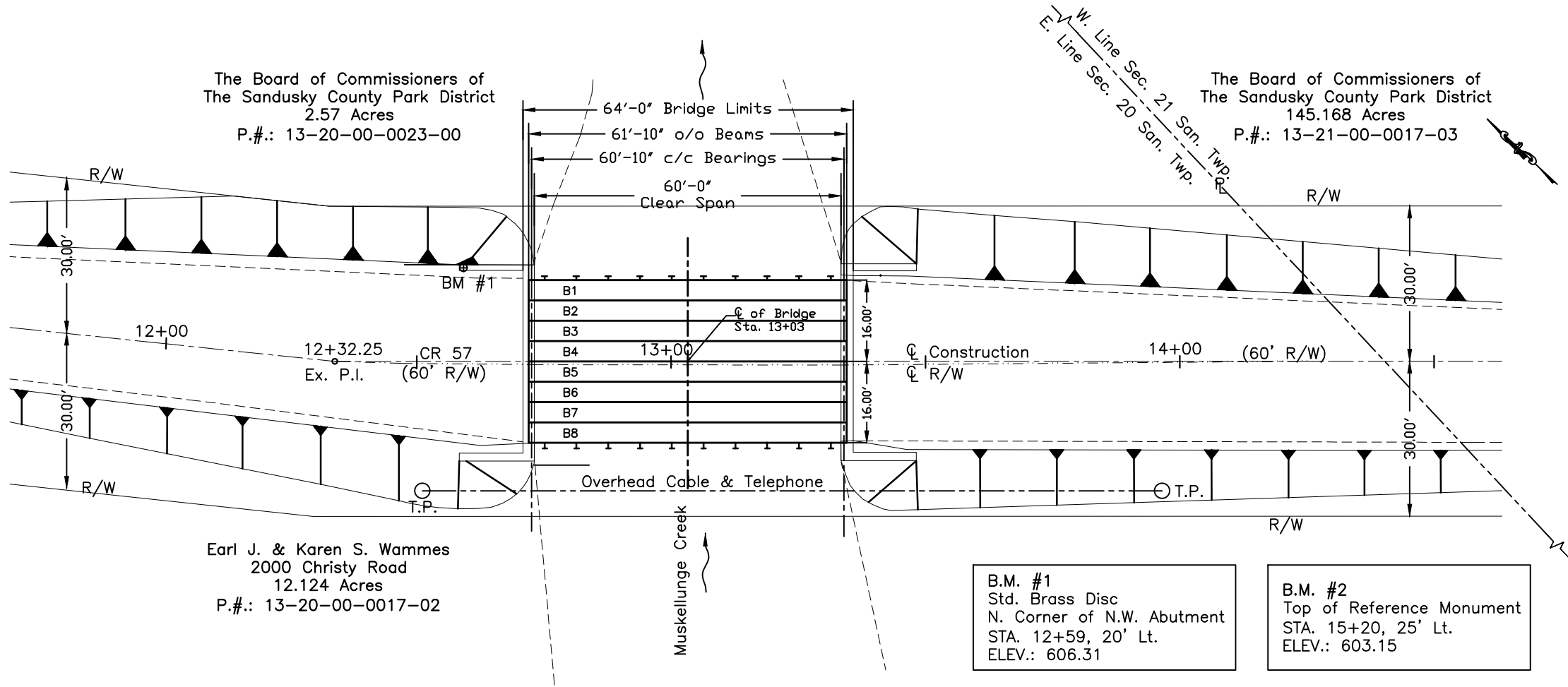
TYPE C ANCHORS PER ODOT DBR-2-73

**ITEM 516-ELASTOMERIC BEARING PAD**

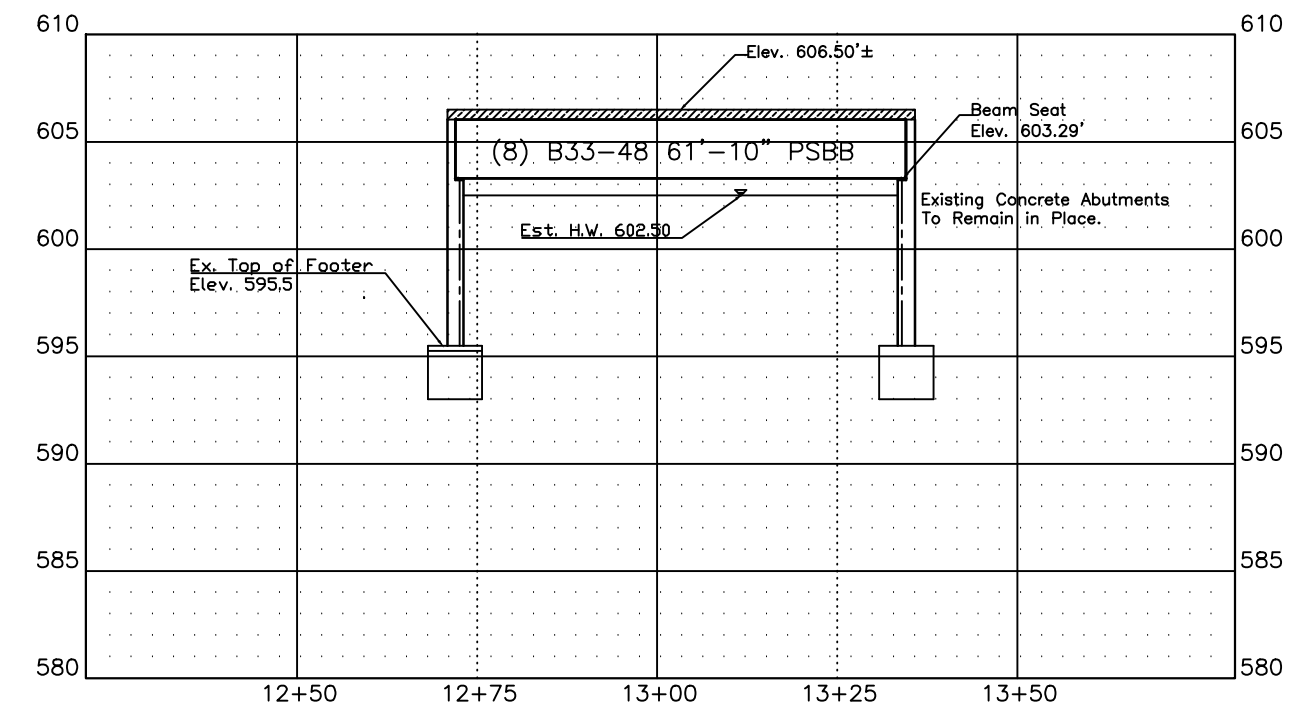
PROVIDE ELASTOMERIC PADS PER DESIGN (32 EACH) BEARING PAD PLACEMENT LOCATIONS AND SPECIFICATIONS SHALL BE SHOWN ON SHOP DRAWINGS  
 6"x12"x2.1" THICK - DURO 50  
 ELASTOMER LAYERS - 5 @ 0.25", 0.375", 0.375", 0.25" THICK  
 STEEL LAMINATES - 4 @ 1/8"  
 1/8" ELASTOMERIC BEARING SHIMS

**ITEM 517-BRIDGE RAILING (DEEP BEAM WITH TUBULAR BACKUP AND TYPE 2 STEEL POSTS)**

ITEM 517 QUANTITY - 125 LF  
 SPECIAL - SS DRIP STRIP (125 LF)



PLAN



PROFILE

**HYDRAULIC DATA**  
 DRAINAGE AREA - 42 SQ. MI.  
 CHANNEL SLOPE - 0.15%  
 RATE OF FLOW (Q25) - 2,500 cfs  
 (Q100) - 3,130 cfs